



EST. 2000

STONE UK

NATURAL STONE
CLADDING

PRODUCT SELECTOR

OUR NATURAL STONE CLADDING

Each stone within this collection is precision cut to a nominal thickness of 20mm, making it suitable for use as a cladding material. The stone is supplied in random lengths to create a natural, coursed appearance that reflects traditional stone construction.

The most commonly specified course height for cladding is 140mm; however, alternative heights of 65mm and 215mm are also available to suit different design requirements. This flexibility allows for a range of visual styles, from more contemporary linear arrangements to traditional, varied coursing.

Cladding can be supplied either as individual pieces for on-site installation or as pre-formed panels where mechanical fixing systems are required. This provides adaptability across a variety of project types and installation methods.





EARTHS TONES

The colour palette presented within this brochure has been carefully developed to reflect the breadth of natural stone tones found across Britain's geological landscape. Ranging from the warm buff hues characteristic of sandstone, through to the soft honeyed creams of limestone, and extending to the cooler, rugged greys associated with Kilkenny limestone, each finish draws directly from naturally occurring materials.

These variations are the result of geological processes spanning millions of years, where mineral composition, sedimentation, and environmental conditions have combined to produce distinctive tonal qualities and textures. Sandstones derive their warmth from iron-rich sediments, while limestones exhibit lighter, creamier shades formed from compacted marine deposits. The denser, darker limestones reflect different mineral conditions and compaction processes, resulting in their characteristic strength and subdued grey appearance.

The stone cladding system has been designed to interpret and replicate these natural characteristics, offering a refined surface that echoes the visual depth and authenticity of quarried stone. Through this approach, the material provides a consistent and controlled finish while maintaining a strong connection to the geological origins that inspired it.



AVAILABLE FINISHES

We offer three distinct finishes for our stone cladding, each designed to suit a range of architectural styles and project requirements. Our most popular option is the Natural Finish, which showcases the raw character of the stone with rugged edges for a truly authentic appearance. The Dressed Finish provides a subtly worked surface while retaining natural texture. For contemporary or highly detailed applications, the Sawn Ashlar Finish delivers a precise, smooth-cut appearance with sharp edges and a uniform profile. Together, these finishes offer flexibility to achieve both traditional and modern design aesthetics.

Natural



Dressed



Ashlar





ALDERWICK NATURAL STONE CLADDING

Natural Finish



Ashlar/Sawn Finish



Sample swatch displaying a typical blend



Alderwick stone cladding is a traditional natural limestone in a lightweight and easy to install format. The cladding is manufactured from high quality natural limestone and supplied at a consistent 20mm thickness, making it suitable for both exterior and interior applications where full-depth stone is not required.

The stone is supplied in coursed heights with random lengths to create a natural and traditional walling finish once installed. A range of stone types is available, allowing the cladding to suit a variety of architectural styles.

Height Options:	65mm	Finishes:	Natural
	140mm		Dressed
	215mm		Ashlar



EST. 2000

STONE UK



MERECROFT NATURAL STONE CLADDING

Natural Finish



Ashlar/Sawn Finish



Sample swatch displaying a typical blend



Merecroft stone cladding is a traditional natural limestone in a lightweight and easy to install format. The cladding is manufactured from high quality natural limestone and supplied at a consistent 20mm thickness, making it suitable for both exterior and interior applications where full-depth stone is not required.

The stone is supplied in coursed heights with random lengths to create a natural and traditional walling finish once installed. A range of stone types is available, allowing the cladding to suit a variety of architectural styles.

Height Options:	65mm	Finishes:	Natural
	140mm		Dressed
	215mm		Ashlar



EST. 2000

STONE UK



AMBERLEY NATURAL STONE CLADDING

Natural Finish



Ashlar/Sawn Finish



Sample swatch displaying a typical blend



Amberley stone cladding is a traditional natural Sandstone in a lightweight and easy to install format. The cladding is manufactured from high quality natural stone and supplied at a consistent 20mm thickness, making it suitable for both exterior and interior applications where full-depth stone is not required.

The stone is supplied in coursed heights with random lengths to create a natural and traditional walling finish once installed. A range of stone types is available, allowing the cladding to suit a variety of architectural styles.

Height Options:	65mm	Finishes:	Natural
	140mm		Dressed
	215mm		Ashlar



EST. 2000

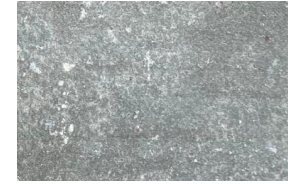
STONE UK





FAWNLEY NATURAL STONE CLADDING

Natural Finish



Ashlar/Sawn Finish



Sample swatch displaying a typical blend



Fawnley stone cladding is a traditional natural sandstone in a lightweight and easy to install format. The cladding is manufactured from high quality natural stone and supplied at a consistent 20mm thickness, making it suitable for both exterior and interior applications where full-depth stone is not required.

The stone is supplied in coursed heights with random lengths to create a natural and traditional walling finish once installed. A range of stone types is available, allowing the cladding to suit a variety of architectural styles.

Height Options:	65mm	Finishes:	Natural
	140mm		Dressed
	215mm		Ashlar



STONE UK

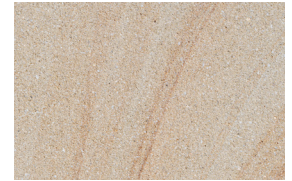


ABBEYSTEAD NATURAL STONE CLADDING

Natural Finish



Ashlar/Sawn Finish



Sample swatch displaying a typical blend



Abbeystead stone cladding is a traditional natural sandstone in a lightweight and easy to install format. The cladding is manufactured from high quality natural sandstone and supplied at a consistent 20mm thickness, making it suitable for both exterior and interior applications where full-depth stone is not required.

The stone is supplied in coursed heights with random lengths to create a natural and traditional walling finish once installed. A range of stone types is available, allowing the cladding to suit a variety of architectural styles

Height Options:	65mm	Finishes:	Natural
	140mm		Dressed
	215mm		Ashlar



EST. 2000

STONE UK





EST. 2000

STONE UK

THORNSETT NATURAL STONE CLADDING



Sample swatch displaying a typical blend



Thornsett cladding is a traditional reclaimed sandstone in a lightweight and easy to install format. The cladding is manufactured from high quality reclaimed stone and supplied at a consistent 20mm thickness, making it suitable for both exterior and interior applications where full-depth stone is not required.

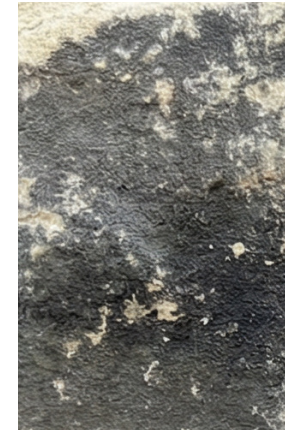
The stone is supplied in coursed heights with random lengths to create a natural and traditional walling finish once installed. A range of stone types is available, allowing the cladding to suit a variety of architectural styles.

Height Options:	65mm	Finishes:	Natural
	140mm		Dressed
	215mm		Ashlar





BLACKERBY NATURAL STONE CLADDING



Sample swatch displaying a typical blend



Blackerby stone cladding is a traditional reclaimed sandstone in a lightweight and easy to install format. The cladding is manufactured from high quality reclaimed stone and supplied at a consistent 20mm thickness, making it suitable for both exterior and interior applications where full-depth stone is not required.

The stone is supplied in coursed heights with random lengths to create a natural and traditional walling finish once installed. A range of stone types is available, allowing the cladding to suit a variety of architectural styles.

Height Options:	65mm	Finishes:	Natural
	140mm		Dressed
	215mm		Ashlar



EST. 2000

STONE UK



LIME BASED POINTING OPTIONS

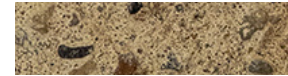
AVAILABLE POINTING OPTIONS

To complement our stone cladding, we offer a carefully selected range of both lime-based and cement-based pointing options, suitable for a variety of applications and construction methods.

A wide selection of colours is available across both ranges, allowing you to achieve a seamless match or a considered contrast with your chosen stone. The following pages present our colour charts, helping you select the most appropriate pointing option to enhance and complement your overall design.



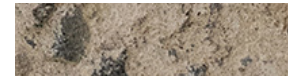
Weathered Ash



Golden Buff



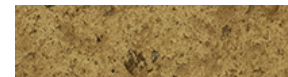
Soft Limestone



Riverbed Blend



Dales Heritage



Warm Quarry Gold



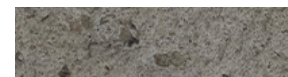
Autumn Earth



Buttermilk Stone



Natural Grain



Storm Grey



Millstone Beige



Clay Ember

CEMENT BASED POINTING OPTIONS



White



Sandstone



Yorkstone



Light Brown



Light Grey



Natural



Dark Grey



Brick Red



Dark Brown



Black

ECO STONE SHIELD STONE SEALER

Our Eco friendly stone sealer offers total protection for all porous surfaces, preventing staining from the build-up of environmental dirt and grime along with accidental spillages such as red wine, grease, coffee, paint and much more.

Is a non-film-forming impregnating treatment, meaning that the treated surface remains breathable and moisture-repellent.

Is environmentally friendly, non-hazardous and safe to use around children, pets, plants and aquatic life.

Is exceptionally easy to use and can be applied in one simple easy treatment.





EST. 2000

STONE UK

INFO@STONEUK.COM

01995 600551

SOUTH PLANKS FARM,
GARSTANG RD,
PRESTON PR3 5AB

STONEUK.COM